

# Internet of Things in Food Traceability

The logo for Dekä features the word "Dekä" in a dark grey, sans-serif font. A small green horizontal bar is positioned to the left of the letter "D". Above the letter "ä", there are three small green dots arranged in a slight arc.

Platforms for the connected world

# Internet of Things in Food Traceability

## Monitoring CO2 in Storage Grain Bags

Monitoring carbon dioxide (CO2) levels in storage grain bags is an effective tool to:

- Reduce weight and quality losses.
- Warn in case of bag damage or removal of sensor.
- Ensure grain existence and location.

### Measurements:

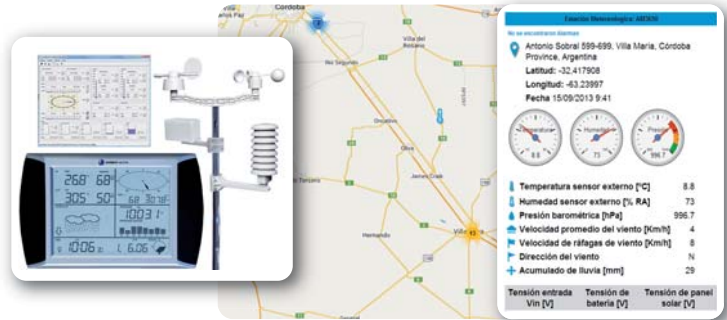
- CO2 concentration
- Temperature inside the silo bags.
- Humidity of inter grain air
- Grain humidity
- Outdoor temperature and humidity



## Weather Station

**Agricultural Weather GSM Stations provide accurate local measurements for various farming applications, giving real-time data on site and over the internet.**

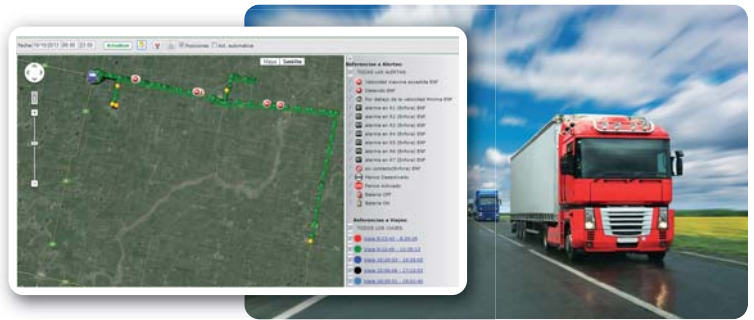
- Wind Speed and Direction (°)
- Outdoor Temperature (°F) and Humidity (%)
- Barometric Pressure (in Hg)
- Rainfall (in)
- Solar Radiation (W/m<sup>2</sup>)
- CO2 Level
- Soil moisture



## Dk-Track Logística + Fletes + GPS

**24/7 real time monitoring and tracking vehicles and cell phones. Implementing Dk-Track you will be able to:**

- Locate vehicles and assets individually or by groups.
- Improve work related driving safety to reduce accidents.
- Verify time of delivery and provide more accurate info to your clients.
- Maximize the performance, life expectancy and ROI of your resources on the field.
- Provide real time feedback if more information is needed to narrow the results. View history data and online customizable reports with the ability to export the result to Excel spreadsheet (or compatible)
- Check the correct usage of resources.
- Obtain the information that is critical for optimizing your logistic strategies and processes.



## Agrobot TRZ - Mobile Work Force

**Allows to manage workflows, to enter data for crops and cattle status, soil test, plant survey, stocks, freights and crop monitoring.**

- Enter data for crop inspection, cattle status, soil tests, sanitary treatments, stocks.
- Add geo tags, images and capture 2d code, RFID tags, etc.
- Manager workflows.
- Tracking and display device location on map in real time
- Print inspection vouchers. View & analyze information.
- Freight management.



## Milk Tanks GSM Monitoring

**Real-time measuring and monitoring of:**

- Amount of milk contained in the cooling tank
- Milk temperature
- State of engines
- Tension and voltage
- Generates alerts in case of maximum or minimum temperatures



## Telemetry equipment



## Partners

